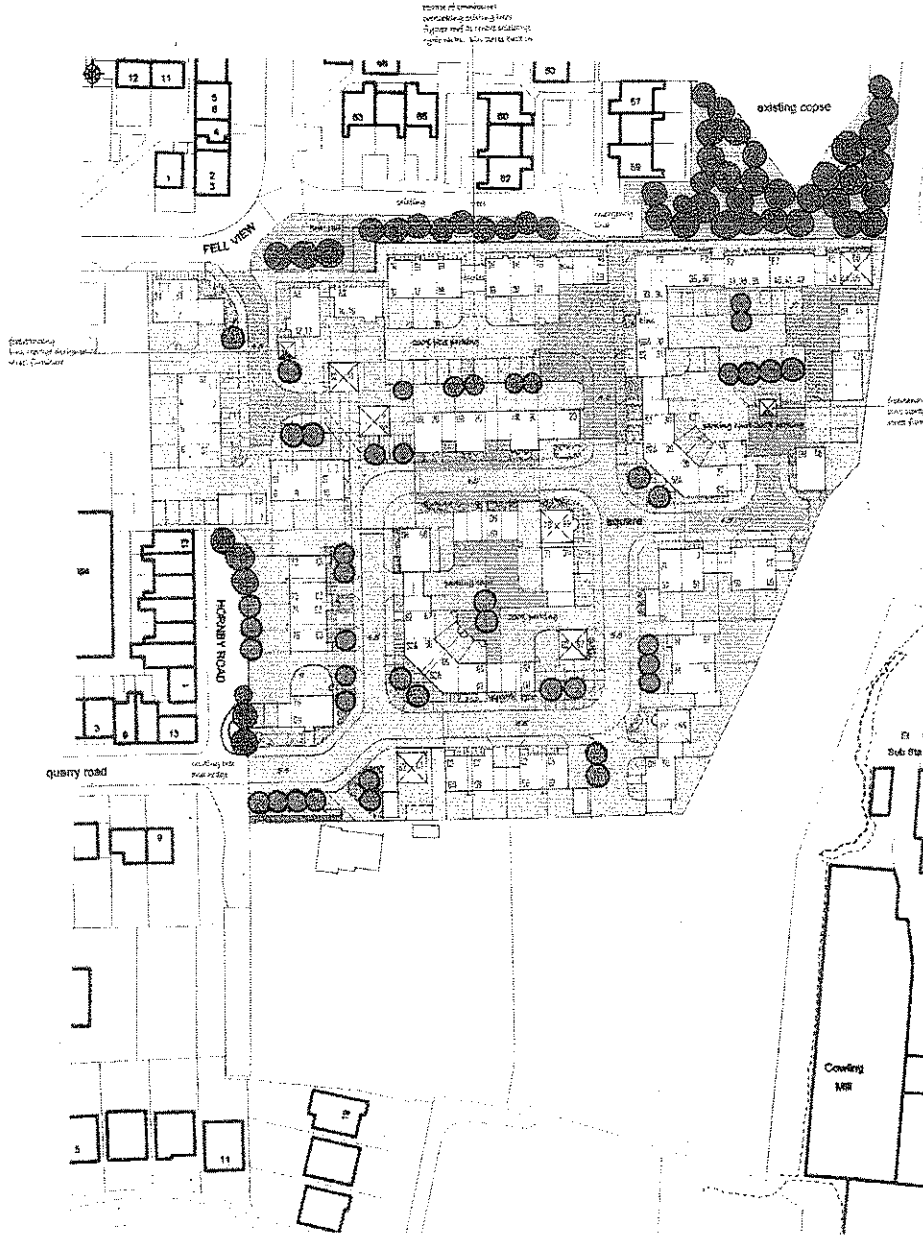


Item 5

QUARRY ROAD, CHORLEY

potential residential development illustrative layout



Proposed 2 storey residential development to be built on plots 1 to 10. The development will include a mix of house types and will be designed to meet the needs of the local community. The development will also include a mix of housing types and will be designed to meet the needs of the local community.

Plot	Number of Units	Units per Plot	Total Units	Area (sqm)	Area (sqft)
1	3	3	3	1,120	12,000
2	3	3	3	1,120	12,000
3	3	3	3	1,120	12,000
4	3	3	3	1,120	12,000
5	3	3	3	1,120	12,000
6	3	3	3	1,120	12,000
7	3	3	3	1,120	12,000
8	3	3	3	1,120	12,000
9	3	3	3	1,120	12,000
10	3	3	3	1,120	12,000
11	3	3	3	1,120	12,000
12	3	3	3	1,120	12,000
13	3	3	3	1,120	12,000
14	3	3	3	1,120	12,000
15	3	3	3	1,120	12,000
16	3	3	3	1,120	12,000
17	3	3	3	1,120	12,000
18	3	3	3	1,120	12,000
19	3	3	3	1,120	12,000
20	3	3	3	1,120	12,000
21	3	3	3	1,120	12,000
22	3	3	3	1,120	12,000
23	3	3	3	1,120	12,000
24	3	3	3	1,120	12,000
25	3	3	3	1,120	12,000
26	3	3	3	1,120	12,000
27	3	3	3	1,120	12,000
28	3	3	3	1,120	12,000
29	3	3	3	1,120	12,000
30	3	3	3	1,120	12,000
31	3	3	3	1,120	12,000
32	3	3	3	1,120	12,000
33	3	3	3	1,120	12,000
34	3	3	3	1,120	12,000
35	3	3	3	1,120	12,000
36	3	3	3	1,120	12,000
37	3	3	3	1,120	12,000
38	3	3	3	1,120	12,000
39	3	3	3	1,120	12,000
40	3	3	3	1,120	12,000
41	3	3	3	1,120	12,000
42	3	3	3	1,120	12,000
43	3	3	3	1,120	12,000
44	3	3	3	1,120	12,000
45	3	3	3	1,120	12,000
46	3	3	3	1,120	12,000
47	3	3	3	1,120	12,000
48	3	3	3	1,120	12,000
49	3	3	3	1,120	12,000
50	3	3	3	1,120	12,000
51	3	3	3	1,120	12,000
52	3	3	3	1,120	12,000
53	3	3	3	1,120	12,000
54	3	3	3	1,120	12,000
55	3	3	3	1,120	12,000
56	3	3	3	1,120	12,000
57	3	3	3	1,120	12,000